
SST NEWS & NOTES

Volume 1, Issue 7

September 23, 2016

Proposed Speed limiter rule published, comment period open (Matt Cole, CCJ)

Matt Cole (<http://ccjdigital.com/author/mcole>) : A proposed rule to mandate the use of speed limiting devices on heavy-duty trucks has been published in the Federal register, officially opening the 60 day comment period on the rule. The US DOT Released the proposed rule Aug 26 (<http://www.ccjdigital.com/dot-proposes-requiring-speed-govenors-on-heavy-duty-trucks-doesn't-specify-speed-limit/>), which would require trucks weighing more than 26,000 pounds to use speed limiters, however, the DOT did not specify a speed at which trucks should be governed. The regulatory body suggested three possible speeds: 60 miles-65 mph or 68 mph. Overall the proposal offers little in the way of guidance toward what a final version of the rule could look like, and the DOT is mainly looking for feedback from the trucking industry and equipment manufacturers about the technical aspects of requiring speed limiters on new trucks, as well as trucks already on the roads. A Final Rule could take months or years to develop, and the DOT outlines a three-year implementation period once the Final Rule is published.

Safety First and Always!
An ounce of prevention is
Worth a pound of cure!

Notes from Helen....

Drivers, If you have a violation and it shows either of these two:

- Load not properly secured
- Or

- Markings are wrong

PLEASE take a picture of the load/trailer/ and shipping doc' with your phone and send to me immediately! This will help if we have to fight the violation! Also remember it is your job as a professional driver that you do your inspections both pre trip and post trip/en route (Empty or loaded) / or when you drop a trailer.

Check your oil, tires, brakes, clean windshields (no cracks or tint), make sure you are in compliance and ready to roll. **OIL IS VERY IMPORTANT!! PLEASE CHECK THIS!**

WEIGH your loads! **IT IS YOUR RESPONSIBILITY!** If there is any question, scale your load! You are a professional driver, we are not pulling the load, you are! **SCALE** your load if there is any doubt ☺

-Helen ☺



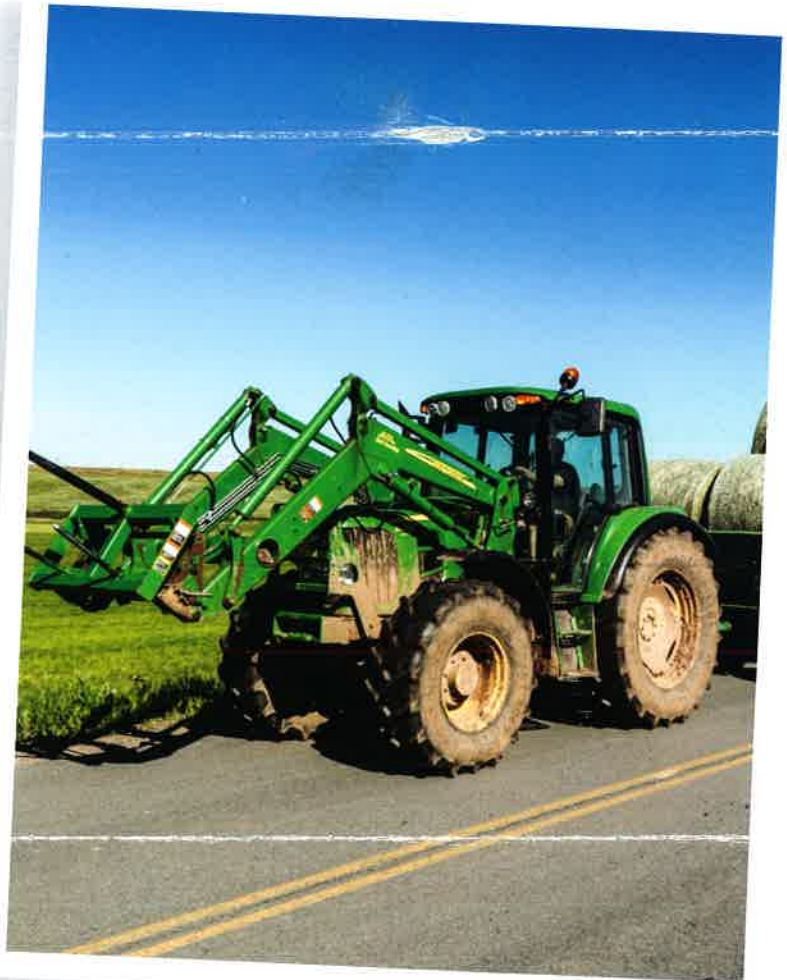
SMART DRIVER® September 2016

Please read: Farm Vehicle Hazards

Slow moving farm vehicles are common this time of year on rural roads and highways. These large farm vehicles typically travel much slower than the posted speed limit, yet commercial motor vehicles and other motorists must share the road with these vehicles. This can create a significant hazard to faster moving cars and trucks.

To prevent a crash with farm vehicles, consider the following tips:

1. Anticipate encountering slow moving farm vehicles during planting and harvest seasons. They typically do not have a lot of warning signs, reflective triangles, or flashing banners to catch a driver's attention from afar, so be on the lookout for them.
2. Avoid all distractions, especially while driving on rural roads. Never talk or text while driving, avoid eating, drinking, and other distractions inside the cab or out.
3. Slow down well in advance of reaching the farm vehicles in order to prevent a rear-end crash. Anticipate sudden movements off-road or into fields.
4. Make sure it is safe and legal to pass the farm vehicle before attempting a pass. As frustrating as it may be to be behind such vehicles, be extremely careful when planning to pass. Only pass in a designated passing zone and ensure there are no oncoming vehicles.



Please read:

Name
Print

Sign

Date

return Thanks

© Copyright Great West Casualty Company 2016. The material in this publication is the property of Great West Casualty Company unless otherwise noted and may not be reproduced without its written consent by any person other than a current insured of Great West Casualty Company for business purposes. Insured should attribute use as follows: "Used with permission by Great West Casualty Company."

This material is intended to be a broad overview of the subject matter and is provided for informational purposes only. Great West Casualty Company does not provide legal advice to its customers, nor does it advise insureds on employment-related issues. Therefore, the subject matter is not intended to serve as legal or employment advice for any issue(s) that may arise in the operations of its insureds. Legal advice should always be sought from the insured's legal counsel. Great West Casualty Company shall have neither liability nor responsibility to any person or entity with respect to any loss, action, or inaction alleged to be caused directly or indirectly as a result of the information contained herein.

